

# WatchGuard Firebox T30-W



LAB  
REVIEWS

This little desktop appliance is big on security features and won't be beaten for value either

The Firebox T30-W offers a raft of enterprise level security features that SMBs will find very affordable.

Its integral 11ac wireless AP makes it even more versatile and new features include simplified installation and zero-touch deployment for remote offices.



## Watchguard's new Firebox T30-W raises the bar for value

as this fire-engine red appliance delivers industrial-strength gateway security at an affordable price. Along with budget conscious SMBs, it also has a sharp focus on distributed enterprises as Watchguard's RapidDeploy service is designed to provide plug and play deployment in remote and branch offices.

There's more as you can add WatchGuard's optional advanced persistent threat (APT) blocker service and data leak prevention (DLP) with a three year license for the full works costing only £2,229.

The T30-W has five Gigabit ports and offers high firewall and UTM throughputs of 620Mbps/sec and 135Mbps/sec respectively. We review the model with

integral dual-band 802.11ac wireless services and both this and the non-wireless T30 present PoE on their fourth LAN port for connecting an access point (AP) or IP camera.

More wireless services are on the cards as both the T30 and T30-W can function as a wireless gateway controller for any of Watchguard's four current AP models. Once the appliance has discovered and paired with them, it will provision centrally managed SSIDs and protect wireless

clients with all the same security measures enjoyed by LAN users.

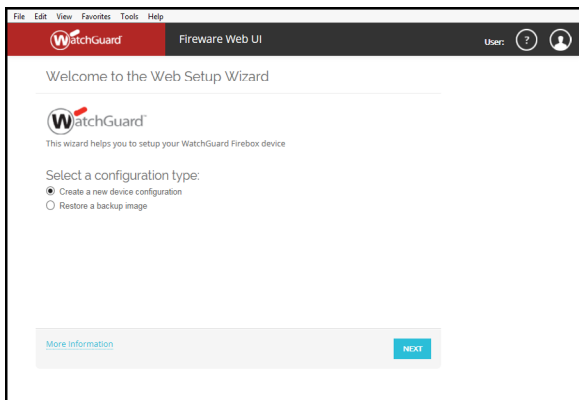
## Easy installation

Small businesses with limited IT resources will find installation a very simple process. We pointed a web browser at the appliance's default management address and followed the quick-start wizard which steps through setting up the first two network ports for LAN and WAN duties and providing DHCP services on the LAN.

Protection starts immediately as the wizard applies a basic firewall policy to protect LAN users. It also configures the appliance to use the flexible mixed routing mode which defines all ports as separate interfaces allowing us to apply different security policies to network segments.

Big businesses with multiple remote or branch offices will approve of WatchGuard's RapidDeploy cloud service. They can use a local WatchGuard appliance to create a standard configuration file and upload it to their cloud account.

Prior to sending out the new appliances to each office, they are registered with the RapidDeploy service. On receipt at the remote site, the appliance is simply plugged in and connected to the Internet whereupon it downloads and applies the relevant configuration file.

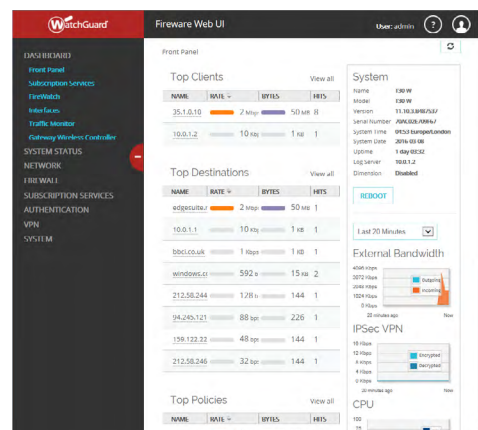


Initial installation is streamlined with a wizard that helps set up protected Internet access

This little desktop appliance looks to have every security angle covered as Watchguard's UTM subscription activates a veritable wealth of features.

These include IPS, web content filtering, anti-spam, anti-virus, application controls, HTTPS inspection and Watchguard's own reputation enabled defence.

Prices look good as the appliance plus a one year UTM subscription costs £988 rising to only £1,575 for three years.



The web console's dashboard provides plenty of useful information on traffic and user activity

